

# ALCOLOCK V3™

Alcohol Ignition Interlock

## Safety and Precautions

---

Alcolock V3 breath alcohol ignition interlock is designed for easy and safe operation. The following precautions should be followed:

- Do not open the interlock handset case. Doing so will void the warranty and potentially damage the components within.
- Avoid exposing interlock handset to direct sunlight for extended periods of time.
- If any liquid is spilled on the interlock handset, remove all excess fluid with a cloth and allow the handset to dry thoroughly. If it is believed there is excessive water damage, do not power on the interlock handset. Contact ACS.
- Keep all RF transmitting devices (such as cell phones) away from the interlock handset to ensure minimal interference.

## Warranty

---

All ACS products are warranted to be free of defects in workmanship and materials for a period of one year from the date of shipment.

ACS agrees to replace or repair any defective Alcolock V3, provided the defect was not caused by misuse or mishandling.

Any Alcolock V3 being returned for warranty repair must be properly packaged and shipped prepaid to the authorized service facility.

## Maintenance

---

Alcolock V3 is made for field use, making them susceptible to dirt and debris. The interlock handset should be cleaned with a damp cloth and mild soap. Do not use abrasive cleaners or solvents.

Periodic maintenance and calibration is required. Contact ACS for more information.

## Contact Information

---

info@acs-corp.com  
acs-corp.com

Alcohol Countermeasure Systems Corp  
60 International Boulevard  
Toronto, Ontario M9W 6J2  
Canada  
T +1 416 619 3500  
F +1 416 619 3501

### **Type Approval: ECE Regulation No.10**

1. This type approval follows only the specifications regarding the electromagnetic compatibility.
2. The devices must be installed in such a manner that all applicable technical rules, and also observing other technical directives and regulations, for the vehicle to be modified still apply.
3. The national regulations and behavioral rules must be observed when using this device.

# TABLE OF CONTENTS

Safety and Precautions .....	ii
Warranty .....	ii
Maintenance .....	ii
Contact Information .....	ii
<i>Canada</i> .....	<i>ii</i>

## **Using the Interlock** **1**

---

Starting the motor .....	1
Restarting the motor .....	3
Running retests (optional) .....	4
Sharing a vehicle .....	5
Overriding the Interlock .....	6

## **Menu Options** **7**

---

Dates .....	7
Volume Set .....	8
Wake-up Mode .....	8
Sleep Mode .....	9
Time .....	9
Language Selection .....	10

**Maintenance & Troubleshooting** **11**

---

Accessing maintenance functions ..... 11

Servicing the Vehicle ..... 11

Calibration ..... 11

Error Messages ..... 11

*ADR Incompatible* ..... 11

*Calibration Expired* ..... 12

*Clock Error* ..... 12

*Error Codes* ..... 12

*Technical Error* ..... 12

*Other* ..... 12

**Index** **13**

---

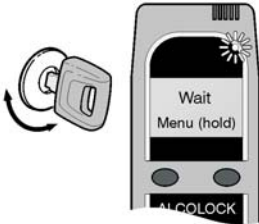
**Service Record** **15**

---

## USING THE INTERLOCK

ALCOLOCK V3 alcohol ignition interlock measures the breath alcohol concentration (BrAC) of the driver and prevents the vehicle from being started if the BrAC is over a predetermined limit. It consists of a handset and Relay Module. The Relay Module enables or disables the ignition of the motor and stores the handset settings.

### Starting the motor



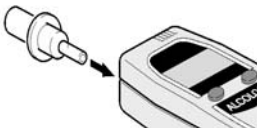
1. Turn the interlock handset power on by pressing the **right** button. The **Wait** message is displayed during warm-up.

Alternately, the power is turned on by turning the key on and off.

*Note: The key must be in the OFF position before moving on.*



2. The interlock handset displays the message **Blow for 5 seconds** when it is ready for a breath test. The warm-up time is longer in colder temperatures.



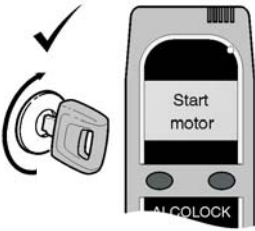
3. Insert a new mouthpiece. Using a new mouthpiece practices good hygiene and ensures a good breath sample.

*Note! Do not eat, drink or smoke anything for at least 10 minutes before taking a test. This contaminates the breath sample.*

4. **Blow** into the mouthpiece moderately and continuously while listening for a tone indicating proper breath flow. If you are not blowing correctly, a message is displayed providing instructions on how to correct it.

5. Stop blowing when the interlock handset tone stops. The **Wait** message is displayed as the breath sample is analyzed.

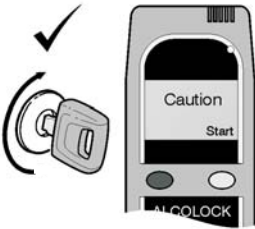
6. The interlock handset beeps and displays the result:



### Start Motor

The breath test passed and no alcohol is detected. You may start the motor.

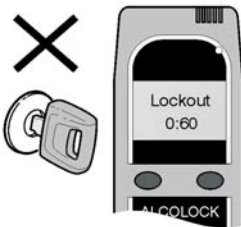
*Note! The motor must be started within 5\* minutes.*



### Caution

The breath test passed, but alcohol below the limit has been detected. There are 2 options:

- **Wait** 5\* minutes and try the test again if you are certain there is no alcohol in your breath.
- Press the right **Start** button to acknowledge you will be driving with alcohol in your system. The motor must be started within 5\* minutes.



### Lockout

The breath test failed. The alcohol level detected is over the preset limit. You may NOT start the motor.

- **Lockout** and a countdown timer is displayed. Wait for the timer to expire before attempting another breath test.

**WARNING!** Do not attempt another breath test until you are sure your alcohol level is under the limit. A second failed breath test may result in a longer lockout time.

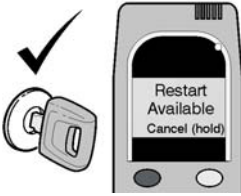
\* This value is customizable.

## Restarting the motor

---

If the motor is turned off for **less than 30 minutes**, it can be restarted without providing another breath test. This is a safety feature if the motor stalls, or convenient for frequent short stops.

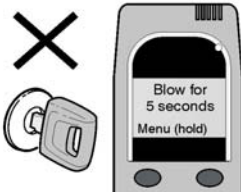
Observe the message on the interlock handset:



### Restart Available

The motor can be restarted without providing another breath test.

*To cancel the restart, press and hold the right button.*



### Blow for 5 seconds

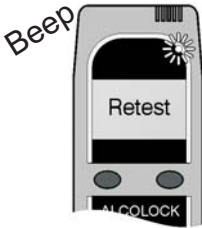
The restart period has expired and a passed breath test is required to start the motor.

*Refer to the Starting the motor section.*

## Running retests (optional)

---

Additional breath tests are required at random intervals to ensure the driver has not consumed alcohol since the motor has been started.



1. The interlock handset beeps and displays **Retest**.

Do not provide a breath test while the vehicle is in motion. V3 allows a few minutes for the user to stop in a safe location.

2. Provide a breath sample and observe the display message:

### **Drive Safely**

The breath test passed, you can continue driving.

### **Pull over, turn off Motor**

The alcohol level is over the preset limit. The motor must be turned off. **Lockout** and a countdown timer is displayed until another breath test can be attempted. You cannot start the motor until a passed breath test is provided.

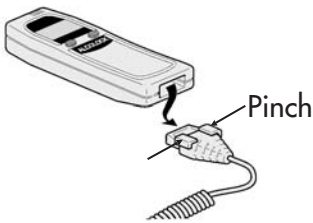
*WARNING! Do not attempt another breath test until you are sure your alcohol level is under the limit. A second failed test may result in a longer lockout time.*

## Sharing a vehicle

Drivers with their own interlock handset can operate the same vehicle without reprogramming V3. All the custom settings are downloaded into the Relay Module when a new interlock handset is connected.

The interlock handset can be changed with the motor on or off.

It is recommended to exchange handsets when the motor is off and the vehicle is parked at a safe location.



**1.** Pinch the connector at the sides and pull the cable away from the interlock handset to disconnect.

**WARNING!** Do not pull on the interlock handset cord. It requires just a gentle squeeze on the release tabs to disconnect.

**2.** If the motor is running, the Relay Module beeps every 15 seconds until the interlock handset is reconnected.

If the motor is off the Relay Module will not beep.



**3.** Reconnect the interlock handset to the handset cable. It makes a click sound if it is properly connected.

All the interlock handset settings are downloaded to the Relay Module.

*Note!* If the interlock handset is replaced while the motor is running, a breath test is required.

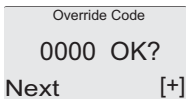
## Overriding the Interlock

---

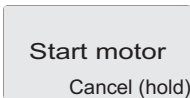
In emergency situations, the ignition interlock can be overridden using a four-digit Override Code provided by ACS. This code is randomly generated and changes daily. The use of the override is stored in the log.



1. Press and hold the **left** button to access the Main Menu. Press the left button to scroll to **Override**. Select with the right button.



2. Use the right button to increase the number and the left to move digits. Once entered, press the right button to move to OK? and again to Select.



3. The interlock handset beeps and displays Start Motor. A breath test will be required again the next time the motor is started.

If the code is incorrect, the interlock handset beeps and there is no action. Verify the code is correct and re-enter.

## MENU OPTIONS

ALCOLOCK V3 has a number of menus and customizable options, such as language selection, time adjustment, sleep and wake-up time settings. All are found in the Main Menu, which is accessed by pressing and holding the left button.

### Dates

---



The current clock date and time, calibration dates, lockout date and service date are found in this menu.

Calibration is required to maintain optimum accuracy. A reminder is displayed on the interlock handset 14 days before the calibration expiry date.

1. Press and hold the **left** button to access the Main Menu. Press the left button to scroll to **Dates**. Select with the right button.
2. Use the left button to scroll through the dates (Lockout, Service, Calibration, Cal. Expiry and Current).
3. Press and hold the **right** button to exit the Dates menu.

## Volume Set

---



The interlock handset uses audio tones. The volume of the tones is set from the Main Menu.

*Note! The volume setting is for the interlock handset only. The volume of the Relay Module cannot be set.*

1. Press and hold the **left** button to access the Main Menu. Press the left button to scroll to **Volume**. Select with the right button.
2. Use the **left and right** buttons to adjust the volume **up or down**.
3. Press and hold the **right** button to save the setting and exit the Volume menu.

## Wake-up Mode

---



The interlock handset has the capability to wake-up up to three times a day. This ensures the handset is warmed up and ready before entering the vehicle.

*Note! Before using this option, be sure the vehicle battery has a sufficient charge.*

*The wake-up option is automatically disabled if the interlock handset is not used for three consecutive days.*

1. Press and hold the **left** button to access the Main Menu. Press the left button to scroll to **Wake-up**. Select with the right button.
2. Select a time slot by placing the cursor underneath an on/off. Set the wake-up time for that slot. The left button moves the cursor and the right button changes the value.
3. Press and hold the **right** button to save the time selection and exit the Wake-up menu.

## Sleep Mode

---



The interlock handset can be put into sleep mode manually or automatically when the ignition is off. This conserves the battery.

To put the interlock handset into sleep mode manually, **press and hold both buttons**.

1. Press and hold the **left** button to access the Main Menu. Press the left button to scroll to **Sleep**. Select with the right button.
2. The sleep menu contains 4 pre-programmed times: **5,30,60** and **90** minutes. Use the left button to scroll and select the time.
3. Press and hold the **right** button to save the time selection and exit the Sleep menu.

## Time

---



The time of the interlock handset can be adjusted when changing time zones and daylight savings time.

This time adjustment is primarily for the Wake-up feature and does not change the times in the Dates menu.

1. Press and hold the **left** button to access the Main Menu. Press the left button to scroll to **Time**. Select with the right button.
2. The current time is displayed with the option to increment the time by +\-. 0.5 to 3.0 hours. Press the right button to increase the time [+ ] and the left button to decrease [-].
3. Press and hold the **right** button to save the time setting and exit the Time menu.

## Language Selection

---



The V3 is available in multiple languages. The selections are made at the time of order and programmed at the factory.

For more information on additional languages available, contact ACS.

1. Press and hold the **left** button to access the Main Menu. Press the left button to scroll to **Language**. Select with the right button.
2. Use the left button to scroll through the languages. Stop at the new language selection.
3. Press and hold the **right** button to save the language selection and exit the Language menu.

## Accessing maintenance functions

---

ALCOLOCK V3's system maintenance functions can only be accessed by service providers using a System Code provided from ACS. This code is randomly generated and changes daily. The use of this override is stored in the log.

## Servicing the Vehicle

---

When the vehicle the interlock is installed in requires service, a Dealer Code provided from ACS is used to start the motor. This code is randomly generated and changes daily. The use of this code is stored in the log.

## Calibration

---

Periodic calibration is required to maintain optimum breath test accuracy. The interlock handset displays a message 14 days before calibration is due. Calibration is performed with either a breath alcohol simulator or a gas alcohol reference. There is a separate Calibration guide available, contact ACS.

## Error Messages

---

### ADR Incompatible

Certain vehicles require an ADR approved handset to transport hazardous goods. An ADR Incompatible message is displayed with a warning tone when a non-ADR handset is connected to an ADR approved vehicle.

## **Calibration Expired**

If the interlock handset is not calibrated before the expiry date, a calibration expired message is displayed. The motor can still be started without a breath test. Press the right button and start the motor as normal. Contact your service provider to arrange for calibration.

## **Clock Error**

If the internal clock circuit fails, a Clock Error message is displayed for several seconds. The interlock handset will still operate correctly, but the time and date information will not be correct.

## **Error Codes**

The handset displays error codes ABORT 10, 20, 30, 40, 45 or 50 if a technical fault is detected. The interlock handset resets to allow the user to attempt another breath test. If the fault continues to be detected, the interlock handset requires service.

## **Technical Error**

If the interlock handset detects an internal failure, a Technical Error is displayed. The motor can still be started as normal with no breath test required. The interlock should be serviced as soon as possible.

## **Other**

The interlock handset may not accept a breath test and display error messages such as:

- Invalid Sample
- Cancelled, Try Again
- Communications Error
- RF Interference
- Incorrect or Low Voltage

To minimize errors, make sure the interlock handset is connected properly, the motor's battery is in good condition and mobile phones are not being used during a breath test. Try the test again.

# INDEX

## A

---

Accuracy ..... 11  
ADR ..... 11  
Alcolock ..... ii

## B

---

Blowing ..... 1  
BrAC ..... 1

## C

---

Calibration ..... 7, 11  
Caution ..... 2  
Clock ..... 9, 12  
Contact Information ..... ii  
    *Canada* ..... ii  
Customizing options ..... 2, 7

## D

---

Dates ..... 7  
Dealer Code ..... 11

## E

---

Emergencies ..... 6  
Error Messages ..... 11  
Exchanging Handsets ..... 5

## L

---

Language ..... 9, 10  
Limit ..... 1, 4  
Lockout ..... 2, 4  
Log ..... 6

## M

---

Main Menu ..... 7  
Maintenance ..... ii

## O

---

Options ..... 7  
Other Error Messages ..... 12  
Override code ..... 6

## R

---

Relay Module ..... 1, 5  
Restart ..... 3  
RF ..... ii  
Running retests ..... 4

## **S**

---

### Service

<i>Inquiries</i> .....	ii
<i>Record</i> .....	15
Sharing a vehicle .....	5
Sleep mode .....	9
Stall Protect .....	3
Starting the vehicle .....	1, 2
System Code .....	11

## **T**

---

Time adjustment .....	9
-----------------------	---

## **V**

---

Vehicle maintenance .....	11
Volume control .....	8

## **W**

---

Wake-up mode .....	8
Warranty .....	ii
<i>Repairs</i> .....	ii
Website .....	ii



