



Snap™

Disposable
Breath Alcohol Tester



Snap™

Disposable Breath Alcohol Tester

SNAP is a disposable breath alcohol tester designed for industrial safety and educational applications. It's available in multiple percentages to test various levels of breath-alcohol concentration (BrAC).

Easy to Use

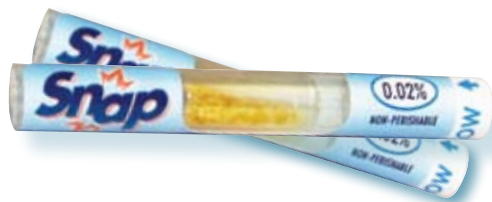
Simply break the inner glass tube with your fingertip. Blow through one end of the tube to provide the breath sample. If the yellow crystals show a visible colour change the subject's alcohol level is above the indicated level on the product label. Results appear in under 2 minutes.

No Batteries or Calibration Required

SNAP does not require costly batteries or calibration. It uses alcohol sensitive crystals that change colour when exposed to alcohol making it perfect for marine use, schools, probation and employment testing.

Multiple BrAC Levels

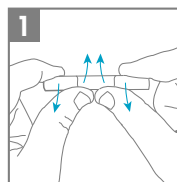
Available in three BrAC levels: 0.02%, 0.05% and 0.08%, SNAP helps you determine which level is best for your environment. Use the 0.02% for zero-tolerance policies or the 0.05% and 0.08% for general alcohol screening.



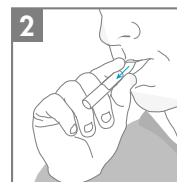
Specifications

Size:	67 mm x 8 mm
Weight:	2 grams
Sensor:	Potassium dichromate / silica
Breath Sample:	5 second moderate and continuous breath sample
Analysis Time:	< 2 minutes
BAC Readout Format:	%BAC
Range of Measurement:	0.02, 0.05 & 0.08 %BAC
Display:	Crystal colour change

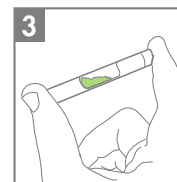
Instructions



1 Squeeze the middle to break inner glass tube.



2 Blow hard into tube for 12 seconds and wait 2 minutes for the reaction.



3 If crystals change color, alcohol is present at or above the test level.

WARNING! Use immediately after breaking inner glass tube. Do not use if glass tube is ruptured prematurely or if crystals are not yellow. **KEEP OUT OF REACH OF CHILDREN! DO NOT IMMERSE IN ANY LIQUID. DO NOT INGEST.**

If ingested, induce vomiting and contact your physician. This product should be used only as a screening device and is only an indication of the possible presence of alcohol in the breath of the test subject. Correlation between breath alcohol content and blood alcohol content depends on many variables, including altitude. The exact concentration of alcohol in the blood of the test subject cannot be accurately determined by using this product. The product is not intended to legally determine blood alcohol presence or level.



ALCOHOL COUNTERMEASURE SYSTEMS

Alcohol Countermeasure Systems Corp

60 International Boulevard Toronto, Ontario M9W 6J2 CANADA

T 416 619 3500 F 416 619 3501 info@acs-corp.com acs-corp.com